



## SYSTEM DESCRIPTION

Horizontal tank are built according to EN 12285-2.

Tank has equipped with

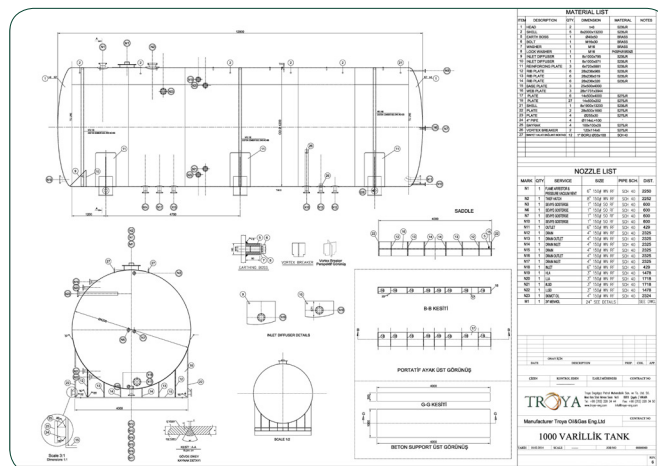
- Emergency Relief
- Vacuum Breaker-Flame Arrestor
- Thief Hatch
- Level Indicator
- Inlet-Outlet Manifolds





Diameter (mm)	2,900 – 4,200
Length (mm)	12,000
Fluid Capacity (BBL)	500 – 1,000
Inner Coating	750 micron Chemflex or 400 micron Tank Guard

*Note: Various sizes and configurations available.*



*Typical Tank Drawing*