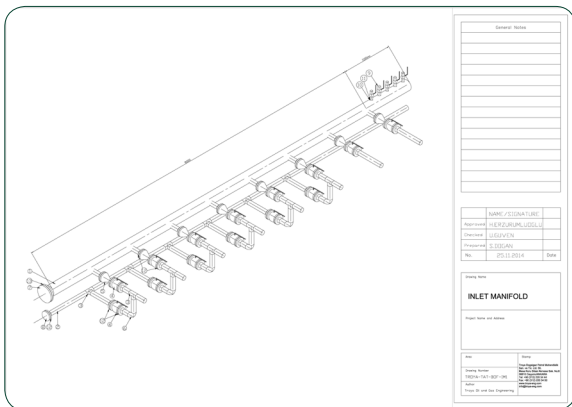




SYSTEM DESCRIPTION

Production and Test Manifolds are used for gathering production from several wells to a centralized manifold where the wells may individually be placed on test and/or production. They may be manually operated or automatically operated with valves with automatic timers. Production and Test Manifolds may be designed for ANSI and API ratings for various design pressures and various pipe sizes. Chokes can be included for pressure reduction, which may be fixed or adjustable and manual or automated. Other instrumentation and controls can be provided per customer specifications.



Typical Manifold Drawing



Manifold Safety Cabinet